



DESIGNLIGHT

SCANDINAVIAN AB

TRACKY TRACKLIGHT, GU10

E-NR: 74 034 17

ART NR: P-807 GU10 B

EFFEKT POWER	MATERIAL MATERIAL	KELVIN KELVIN	ARMATURFÄRG ARMATURE COLOR	ANSLUTNING CONNECTION	TOTAL LUMEN	USEFUL LUMEN
10W MAX	ALUMINIUM		BLACK	230V		

ROHS CE



- SKENSPOTT GU10 SOCKEL, DÄR DU SJÄLV BESTÄMMER VILKET LJUS DU VILL HA
- RIKTBAR
- STILREN DESIGN

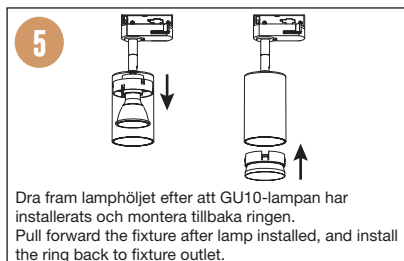
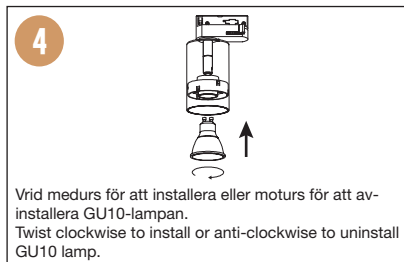
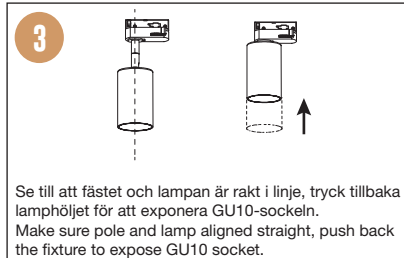
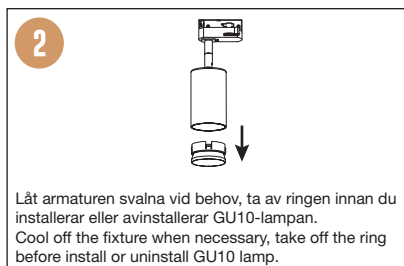
- SPOTLIGHT GU10 BASE, YOU DECIDE WHICH LIGHT YOU WANT
- DIRECTIONAL LIGHT
- STYLISH DESIGN



PASSAR
1-FASSKENA

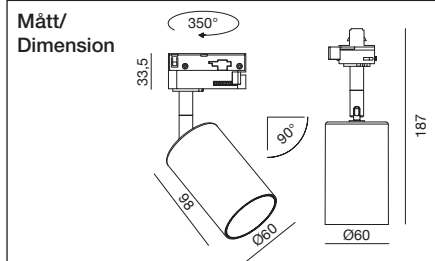
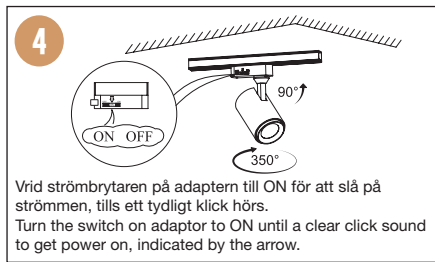
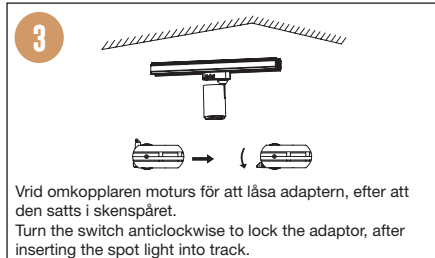
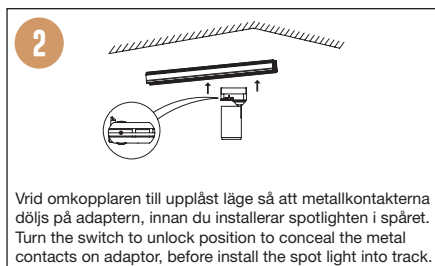
INSTALLATION ELLER BYTE AV GU10-LAMPA INSTALL OR CHANGE A GU10 LAMP

1. Stäng av strömmen/Turn off the power



INSTALLATION AV TRACKLIGHT PÅ SKENAN INSTALL FIXTURE ONTO A TRACK

1. Stäng av strömmen/Turn off the power



⚠ SÄKERHET:

- 1 Läs igenom hela manualen noggrant före installation.
- 2 Försäkra dig om att spänningen är frånslagen före installation eller underhåll.
- 3 Installation ska utföras av behörig elektriker.

⚠ SAFETY:

- 1 Read the entire manual carefully before installation.
- 2 Make sure that the power is switched off before installation or maintenance.
- 3 Installation must be performed by a qualified electrician.



1.900K	2.700-3.000K	4.000-4.500K	4.800K	5.000-5.000K	7.000-7.500K	10.000K
STEARINLJUS CANDLE	VÄRMVIT WARM WHITE	NATURLIG VIT NATURAL WHITE	SOLLJUS DIRECT SUN	VITT DAGSLJUS DAY WHITE	KALLVIT COOL WHITE	BLÅ HIMMEL BLUE SKY

LÄS MER OM VÅRA GARANTIVILLKOR PÅ WWW.DESIGNLIGHT.NU READ MORE ABOUT OUR WARRANTY CONDITIONS AT: WWW.DESIGNLIGHT.NU

DESIGNLIGHT
SCANDINAVIAN AB

DESIGNLIGHT SCANDINAVIAN AB · TOFFELVÄGEN 1 · SE-342 60 MOHEDA · SWEDEN
TELEFON/PHONE +46 (0)472-716 10 · INFO@DESIGNLIGHT.NU · WWW.DESIGNLIGHT.NU